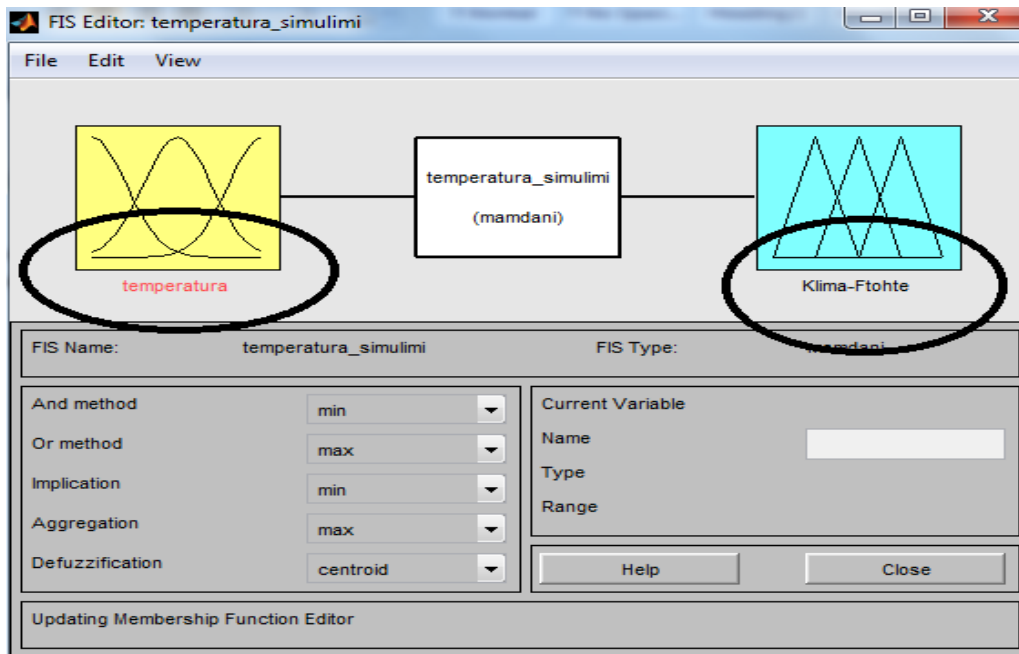
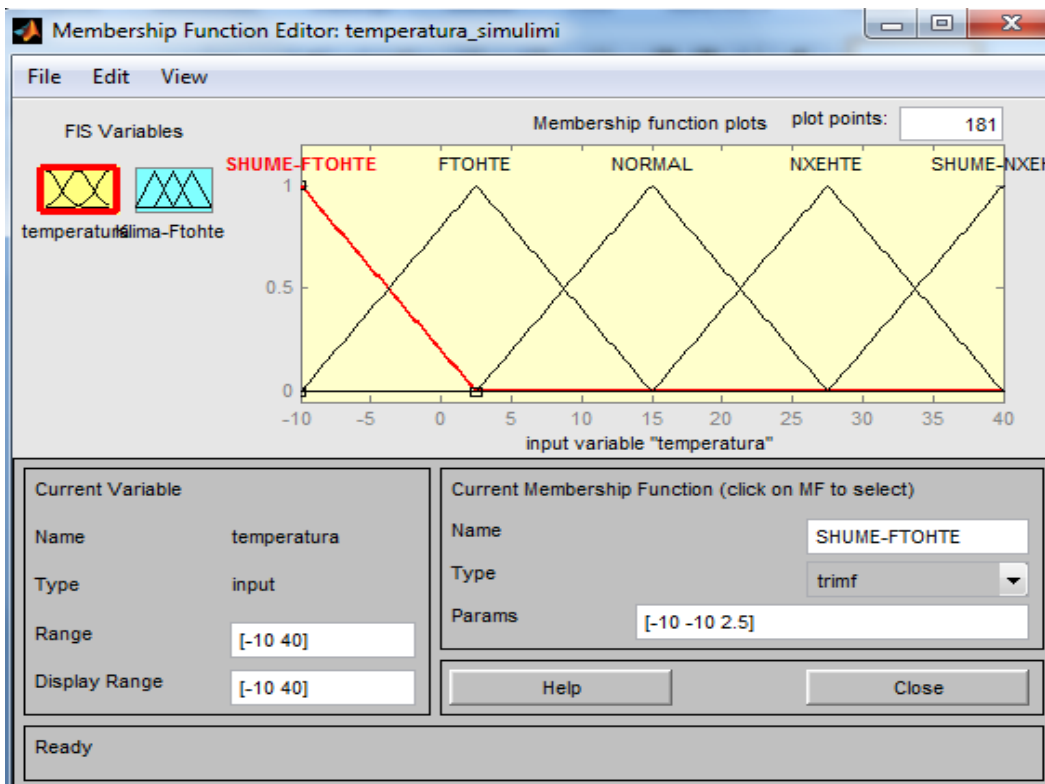


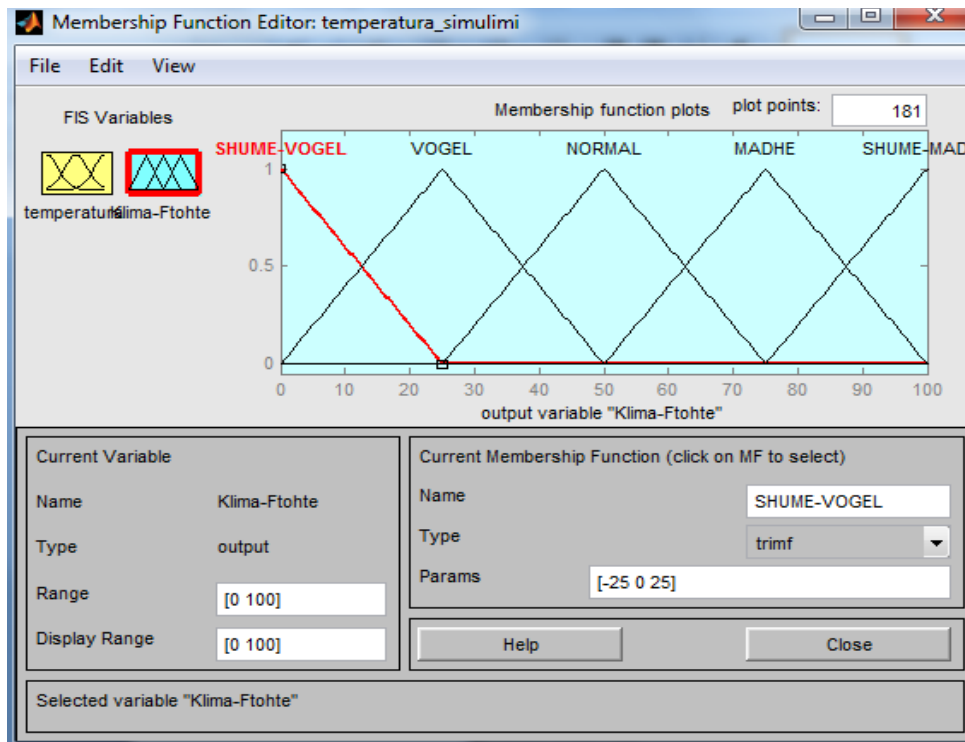
- Krijimi i sistemit logjike-Fuzzy per stabilizimin e ajrit ne nje ambient te caktuar
- Ne figuren e meposhtme, kemi paraqitjen e Hyrje/Dalje te sistemit logjike-Fuzzy



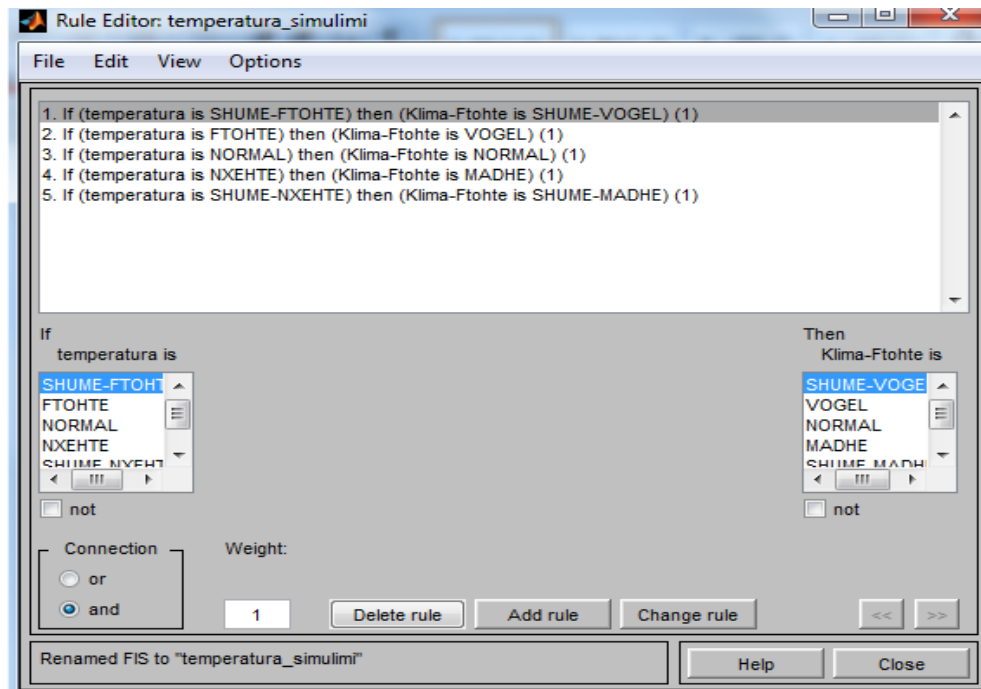
- Modifikimi i hyrjes, duke krijuar 5 nivele logjike, ne varesi te temperatures se ambientit.



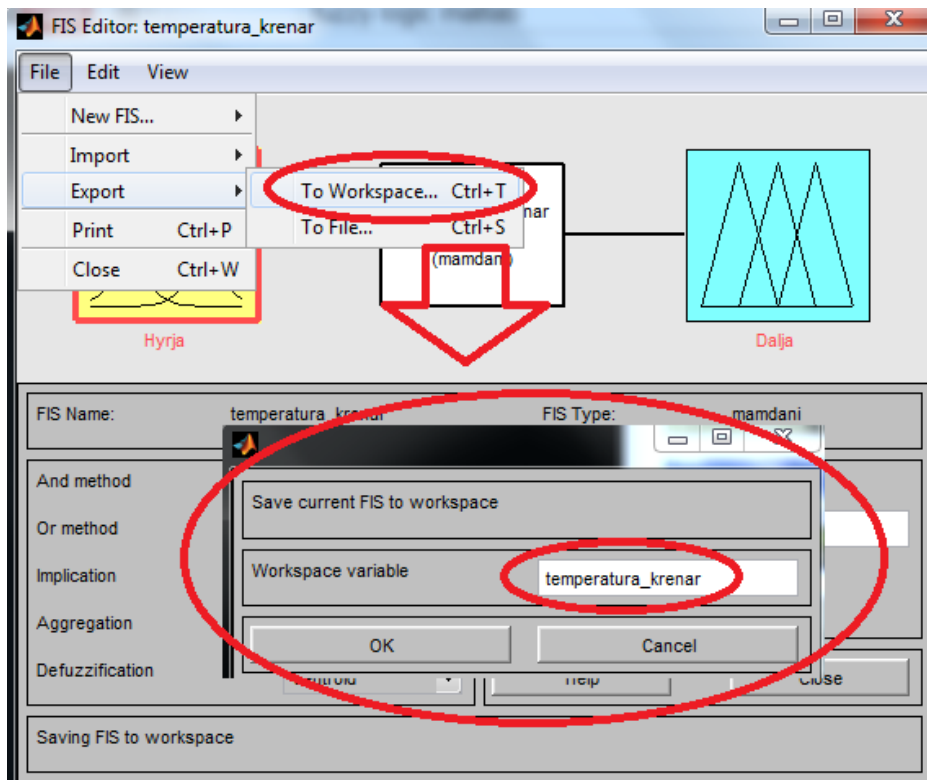
- Modifikimi i daljes, duke krijuar 5 nivele logjike, ne varesi te temperatures se hyrjes.



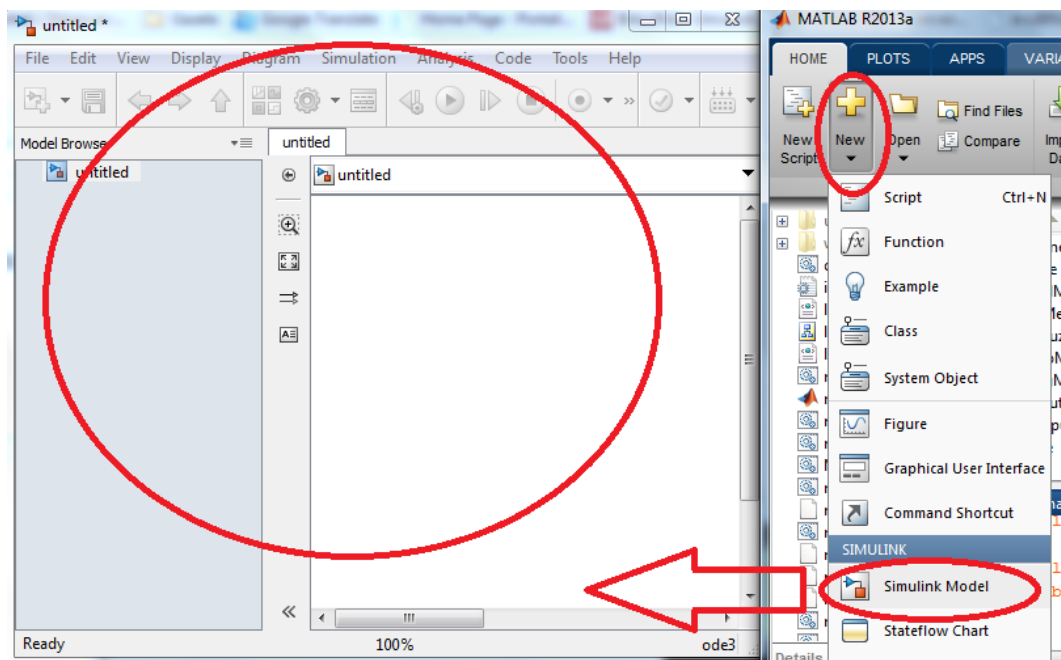
- Krijimi dhe modifikimi i rregullave Hyrje/Dalje



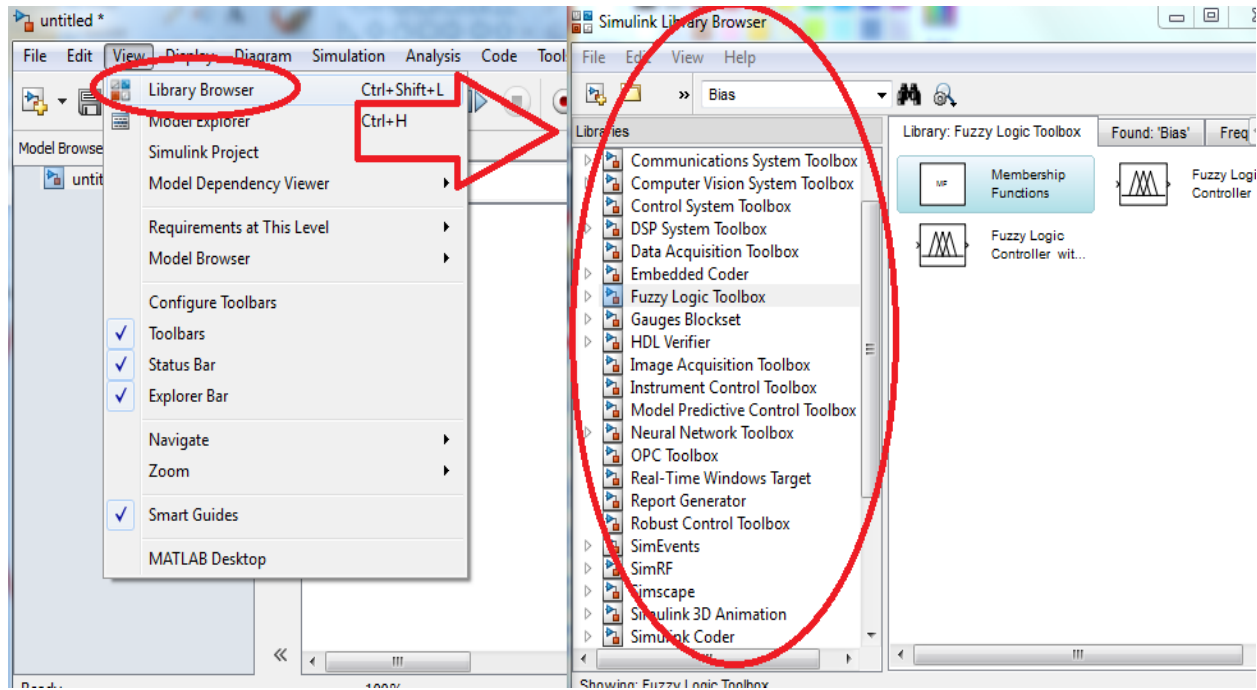
- Ruatja e projektit konkludues (perfundimtar) ne hapsiren punuese



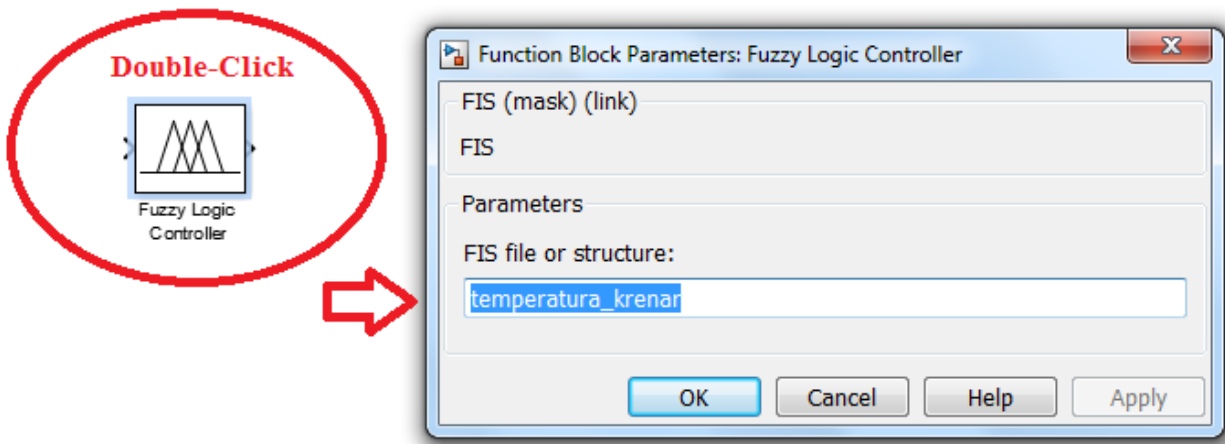
- Hapja e hapsires se simulimeve ne gjuhen MatLab



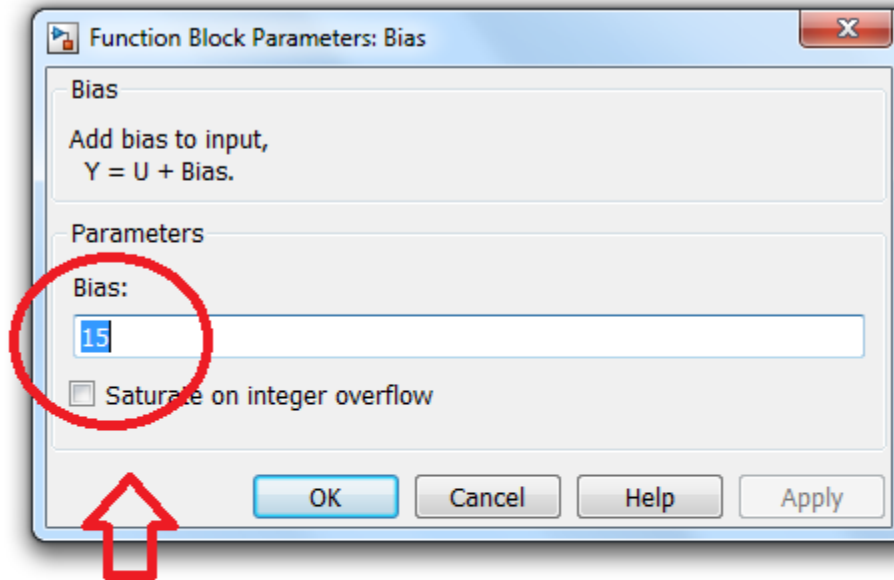
- Paraqitja e librarise ne hapsiren e simulimeve



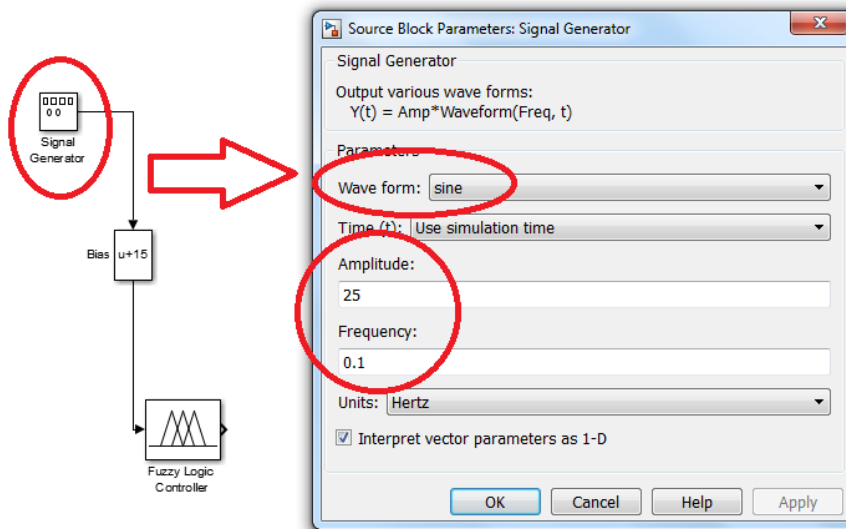
- Thirrja e funksionit Fuzzy-Logjike ne baze te emertimit te projektit konkludues, njejte si e kemi ruajtur ne hapsiren punuese



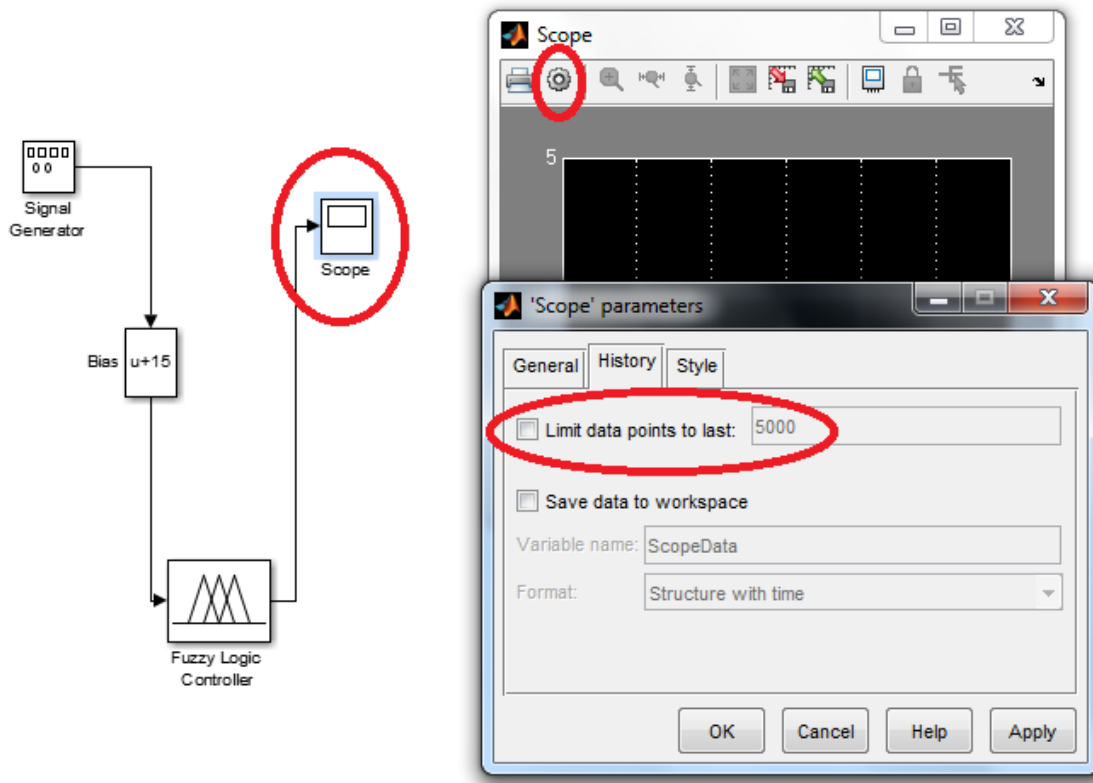
- Modifikimi i pjerrtesise se sinjalit



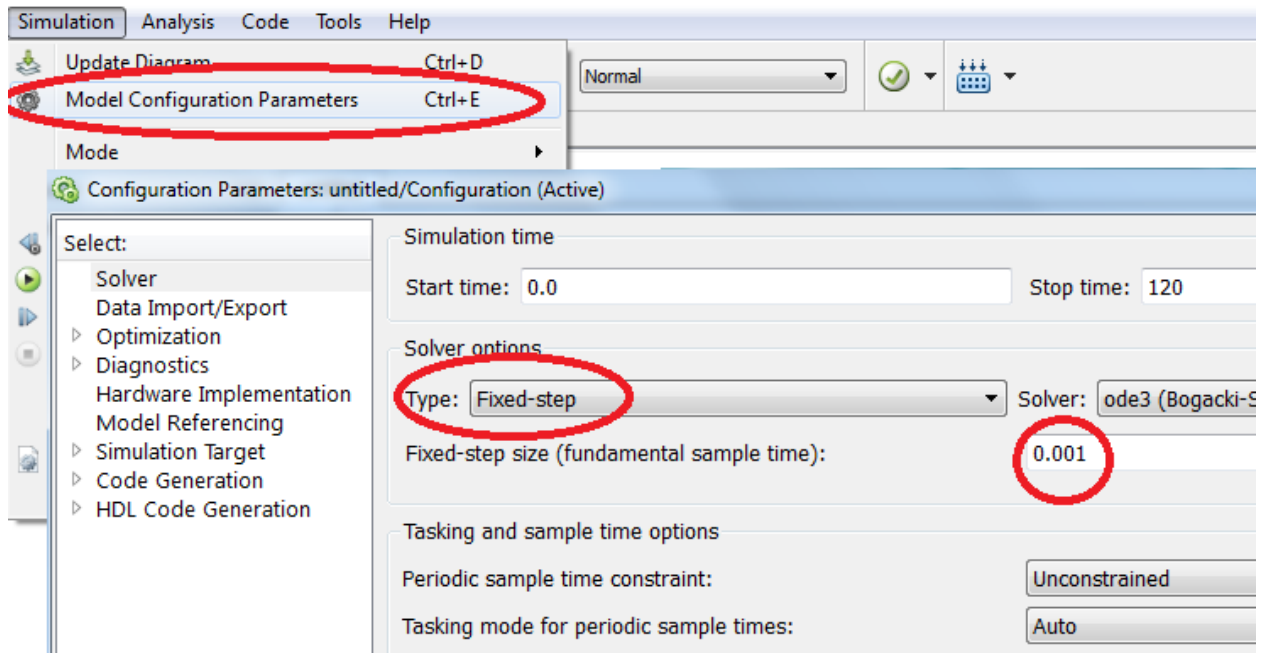
- Modifikimi i sinjalit ne hyrje te simulimit



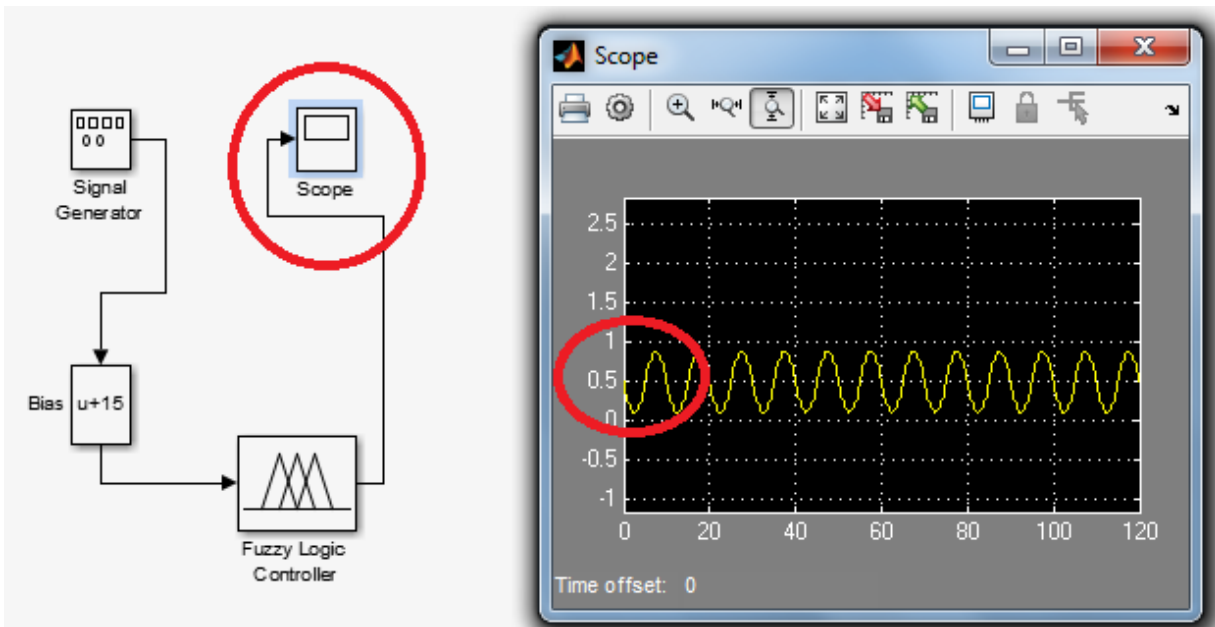
- Modifikimi i paraqitjes grafike te sinjalit te daljes



- Modifikimi i sistemit te simulimit



- Paraqitja grafike e sinjalit te daljes



- Paraqitja grafike e sinjalit Hyrje/Dalje

